

SINCE  
**1994**



# Reliance Group

**Reliance Group has been serving the Oil & Gas, Marine & Offshore and all major Industries in the U.A.E.**

We are dedicated to offer our Products and Services to our clients and Community as a whole. We are into diverse fields of activities. Even more important is that, we have expanded our Logistics and outlets network from Abu Dhabi-Dubai-Sharjah. We are the major Ferrous and Non-Ferrous Metals Importers and Stockist. Our excellent relations with local governments, customers and other business partners is our core strength.



Reliance Group

# About Us

We're recognized among the established Suppliers in UAE. Considered among the best Importers & Stockists of unlimited range of Ferrous and Non-Ferrous Metals like Aluminum, Brass, Bronze, Copper, Stainless Steel, Carbon & Alloy Steel, Tools and Dies Steel, Hydraulic Chrome Plated Shafts and Honed Tubes, Plastic & Plastic Products with a good track records.

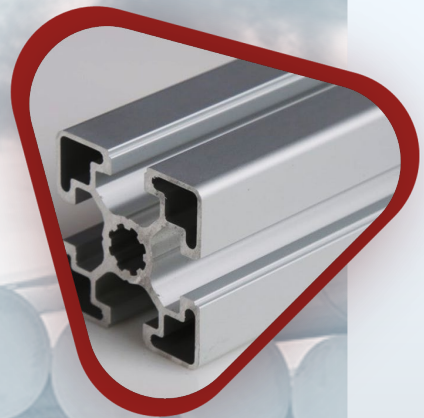
Reliance Group is administered and operated by well-qualified and skilled team with professional approach towards the business. Our experience has facilitated better and reliable customer support and services.



Our specializations is in metals and we serve various industries :

- Oil & Gas Industries
- Marine Sector (Offshore & Onshore)
- Ship Building & Ship Repairers
- Cement & Block Factories
- Fastener Manufacturers
- Petro-Chemicals
- Tools & Dies Manufacturers
- Constructions & Buildings
- Interior Designing
- Plastic Manufacturers
- Engineering Companies
- Tools Room and Machine Shops Requisites





# Aluminium

## Extrusions

**6063 T6**

Round Bars : From 6 mm to 60 mm

Square Bars : From 6 mm to 101.60 mm

Angles, Flats, SHS, RHS & Round Pipes in full range.



## Plain Sheets & Chequered Plates

**AA1100** : From 0.65 mm to 50 mm in 4' x 8'

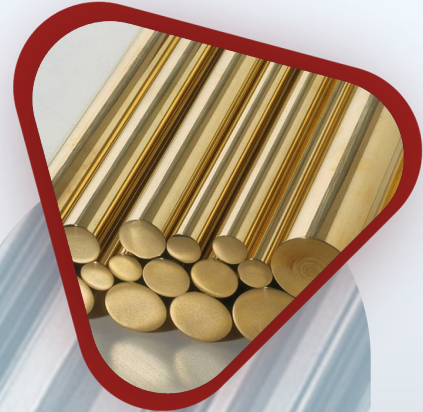
**5083 H111 / H116** : From 1 mm to 50 mm

**7075 T651** : From 10 mm to 200 mm cut to size.

## Round, Hollow & Square Bars

**6061 T6** : From 20 mm to 600 mm.

**6082 T6** : From 20 mm to 600 mm.



# Brass & Bronze

## Brass

Round Bars, Hexagonal Bars, Square Bars, Flat Bars & Sheets in full range.

## Bronze

**Tin Bronze : BS1400 LG2 / LG4 / SAE660 / RG7**

Round Bars : From OD 12 mm to OD 254 mm.

Hollow Bars : From OD ½" to 18".

**Phosphor Bronze : PB1 & PB2**

Round & Hollow Bars : Various sizes.

**Aluminium Bronze : C95400, C95800, C95500  
& C63000**

Round Bar : From OD 25 mm to 203 mm

Hollow Bars : From OD 1" to 12".



# Copper

**Round Bars, Square Bars,  
Flat Bars, Tubes & Sheets**

Full range available.



# Stainless Steel & Steel Products

## Stainless Steel

### **304 & 316L**

Round Bars : From 3 mm to 400 mm

Hex Bars : From 12 mm to 76.2 mm.

Square Bars : 6x6 to 60x60 mm

Sheets : From 0.5 mm to 120 mm ( Cut to Size)

Seamless Pipes : From ¼" to 12" in Sch10,  
Sch40, Sch80, Sch160 & SchXXS.

### **410 & 420**

Round Bars : All sizes

## Die & Tool Steel

*Cold Work and Hot Work*

### **D-2/1.2379, D3/1.2083**

Round Bars : From 12 mm to 400 mm

Flat Bars : From 10 mm thick to 150 mm thick.

In various sizes all cut to size.

### **H-13/1.2344**

Round Bars from 30 mm to 400 mm

Flat Bars from 40 mm to 120 mm thick

## Carbon Steel & Alloy Steel

### **C-20/22, C-35, C-45**

Round Bars : From 8 mm to 700 mm

Hex Bars : From 8 mm to 110 mm

Square Bars : From 10 x 10 to 200 x 200 mm

Hollow Bars : From OD 50 mm to OD 400 mm

Plates : From 10 mm thick to 150 mm thick.

### **EN19/4140 QT / EN24 /4340 QT**

Round Bars : From 12 mm to 400 mm

### **ST52/S355JR**

Round Bars : From 16 mm to 400 mm

## Fastners Grade

### **8.8, 10.9 & B-7**

Round Bars : From 8 mm to 110 mm

## Plastic Mould Steel

### **P-20/1.2311, 1.2312 & 1.2316 & 1.2738**

Round Bars : From 30 mm to 160 mm

Flat Bars : From 20 mm thick to 150 mm thick



# Cast Iron, Hard Chromium Plated Bars & Hydraulic Cylinder Tubes

## Cast Iron

Round Bars : From 20 mm to 400 mm

Square Bars : From 40x40 to 125x125 mm

Hollow Bars : Various sizes.

## Hard Chromium Plated Bars

CK45 Chrome Shafts : From 8 mm to 200 mm

In full Range in Metrics and Inches.

## Hydraulic Cylinder Tubes

ST52 Honed Tubes : From OD 40 mm to OD 300 mm In full Range in Metrics and Inches.

# Lead & Zinc

## Lead

Lead Sheets in full Range from 0.5mm to 6mm

1 Meter Width Available in Rolls

## Zinc

Round Bars. Weights & Plates available in any size as per client requirement.





# Shims, Plates, Sheets & Meshes

## Shims

Stainless Steel, Brass & Copper Shims  
Full Range in 6" X 50" & 12" X 100".



## Wear Resistant Plates

Hardox 400/450/500/600  
Full Range.

## Perforated Sheets

Mild Steel, G.I. and Stainless Steel 304 & 316  
Perforated Sheets in from 0.8 mm thick to 6 mm thick in 4'x8' , 1m x 2m & 1.5m x 3m.



## Wire Meshes

Stainless Steel Grade 304 & 316 from 1 Mesh to 200 Mesh.



# Plastics & Plastic Products

## Nylon (HDPE & PP - Black & White) Teflon (PTFE)

Round Bars : From 8 mm to 500 mm  
Sheets : From 0.5 mm to 100 mm thick  
In 1Mx2M & 1Mx1M.



## Engineering Nylon (PA-6)

Round Bars : From 16 mm to 500 mm  
Sheets : From 8 mm to 100 mm thick.

## Delrin / POM / PVC/ Acrylic

Round Bars : From 16 mm to 200 mm  
Sheets : From 1 mm to 100 mm thick.



## Bakelite

Round Bars : From 15 mm to 250 mm  
Sheets : From 2 mm to 50 mm thick in 4Ft x 4Ft



Reliance Group

# Contact Us



**Reliance Alloy Steel  
Trading LLC  
Dubai**

Plot #215-278, Opposite Bin  
Daher Motors, Umm Ramool  
Street 24B, Al Rashidiya,  
Dubai, United Arab Emirates

P : +971 4 2844853

M : +971 56 6092536

info@reliancealloy.com



**Reliance Aluminium & Copper  
Products Trading  
Sharjah**

Shop #6, Adnan Mansour  
Building, Near Darray  
Pharmacy, Industrial Area #1,  
Sharjah, United Arab Emirates

P : +971 6 5329457

M : +971 50 3171364

info@reliancealloy.com



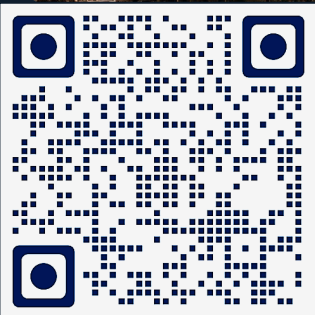
**Reliance Technical &  
Engineering Equipments Est.  
Abu Dhabi**

Shop #5, M-26, Mussaffah  
Industrial Area, Abu Dhabi  
United Arab Emirates

P : +971 2 5540099

M : +971 55-8811652

relitech@eim.ae



Visit our website for more details

**reliancealloy.com**

